

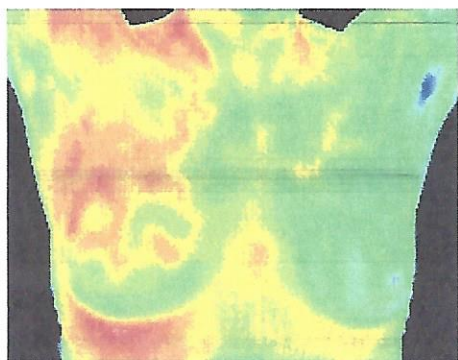
Average Growth Rate of Breast Cancer Tumor

Cancer cells double in number on average every 90 days

90 days	2 cells	A box spanning from 2 cells to 65,536 cells, with a line pointing to the text 'Atypical pre-cancerous cells'.	Atypical pre-cancerous cells
1 year	16 cells		
2 years	256 cells		
3 years	4,096 cells		
4 years	65,536 cells		
5 years	1,048,576 cells	Still Undetectable with mammography	
6 years	16,777,216 cells		
7 years	268,435,456 cells		
8 years	4,294,967,296 cells	Doubled 32 times* and normally detected by mammogram at this stage	
			*(1cm size)

Source:

Buchanan JB, et al. Tumor growth, doubling times, and inability of the radiologist to diagnose certain cancers. Radiol Clin N Am. 1983;21:115-26



40 Doublings (Approx 10 years) is generally considered lethal

Screening thermography has the opportunity to detect changes at any stage in the development from the first year through to when a tumor is dense enough to be seen with mammography. This early detection of change can lead to earlier diagnosis and better treatment options as well as the opportunity for patients and their healthcare practitioners to intervene at an early stage with preventative treatment.